



Hanse 575 - 2013

368.000€

Lenght	17,15 m.	Disp.	19,5 ton	Rig	In mast Furling
Beam	5,20 m.	Engine	Volvo Penta D3 - 150	Cabin / Wc	3+1 / 2+1
Draft	2,85 m.	Engine Hour	1520	Location	Marmaris

Description

A work of German engineering, the Hanse 575 is a delightful sailboat with extra equipment, comfort and superior sailing performance.

Navigation & Cruising Equipments

2x Simrad 12" Chartplotter
 Simrad Radar
 Simrad multifunction display
 Simrad VHF 50 , charttable handset
 Autopilot
 VHF,FM & AIS for antena

Multimedia & Entertainment

KVH Satellite
 Music system Plus FUSION AV700 CD-DVD
 FUSION Remote cockpit İpod, Android
 USB Bluetooth bağlantısı
 TV Samsung LED TV Saloon
 Tv Antena

I2-220 V Electrics

Fisher Panda 8000i Genset (20 h)
 Victron inverter; charger combo
 1x90Ah engine 4x160 Ah service battery
 Shore power

Deck & Outside Equipments

Light blue hull color
 Convertible cockpit table for bed
 Teak cockpit
 Deck wash system
 Deck lights
 ULTRA anchor; 45 kg, 140 m chain
 2x Lewmar 65 REVO elect winches
 2x Lewmar 55 EST manuel winches
 Z spars must , in mast furling
 Elvström FCL mainsails
 GRP black steering wheels
 Sprayhood, Bimini pfeifer
 Sunbad
 Plastimo lift raft

Additional Equipments

Wine cooler
 Aircondition
 Underwater lights
 Quick Bow & stern thruster
 Quick chain counter remote
 Besenzoni gangway
 Easy tender system tender garager
 Water maker 125 lt
 Foldable prop

Galley

ENO 3 oven, stove
 Fisher Paykel dishwasher
 Vitrifrigo 2 pieces fridge
 Vitrifrigo deepfreeze
 Extra fridge

Layout

3 cabin
 3 wc
 Crew cabin

Tanks

Fuel : 520 liter
 Fresh Water : 810 liter
 Holding: 300 Liter
 Grey: 100 liter

Notes

Turkish Flag

























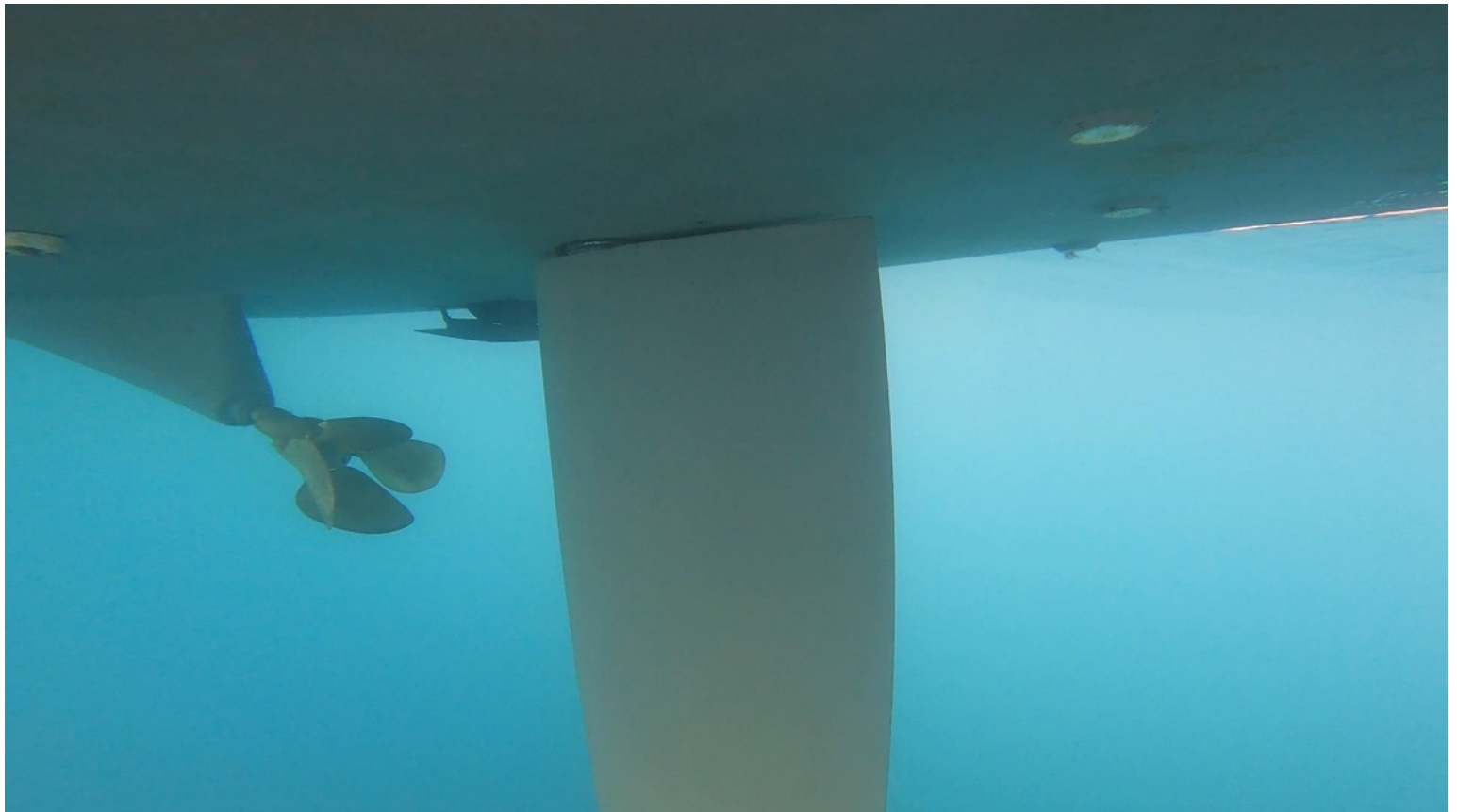














D2

C2

B1

A2



Can Arslan

+90 534 366 60 80 canarslan@canmarino.com

Can Oğuz

+90 532 710 88 58 canoguz@canmarino.com