



Bavaria 45 Cruiser - 2013

195.000€

Length	14,27m.	Disp	12,6 tons	Rig	In mast furling
Beam	4,35m.	Engine	Volvo Penta D2 55	Cabin / Wc	3 / 3
Draft	2,16m.	Engine hour	1050 hours	Location	Bodrum

Description

45 Cruiser is one of the most preferred models of German shipyard Bavaria. We can say perfect for Interior volumes and comfort of the cockpit. The boat which is ordered with Voyager equipment pack used for only by her carefull owner and his family .Never used for commercial cruises.

Navigation & Cruising Equipments

Simrad 8 Chartplotter
2x Garmin GMI 10 Tridata
Garmin GHC 10 Autopilot
Garmin GHS 10 i VHF
2x Plastimo Compass

Multimedia & Entertainment

JVC music system
Speakers saloon and cockpit

12-220 V Electrics

2 x 120 Watt Solbian Solar panels
1600 Watt Sterling Power Inverter
3x 210 Ah Odyssey gel service batt (2021)
2x 45 Ah Odyssey Thruster batteries
Sterling Power 60 Ah charger (service)
Cristec 40 Ah charger (start & thruster)
Victron battery monitor

Deck & Outside Equipments

Teak cockpit floor
Quick Windlass
27 kg Ultra Anchor – 80m chain
Selden Rig
In mast furling main sail
Elvström sails
2x Lewmar 55 Cenoa winches
2x Lewmar 45 Halyard winches
Sprayhood – Bimini
Cockpit cushions

Additional Equipments

Jabsco Électrical wc
Side power bow thruster
Electrical swiming platform
Webasto diesel heater
Air condition
Highfield 2,60m Alu dingy
Aquamot electical engine

Galley

Isoterm top open fridge
Vaeco fridge
3 burner stove - oven
Electrolux Dishwasher

Layout

3 Cabin
3 wc

Tanks

Fuel Tank: 210 Liter
Fresh water: 360 Liter
Black water: 170 Liter

Notes

TR flag









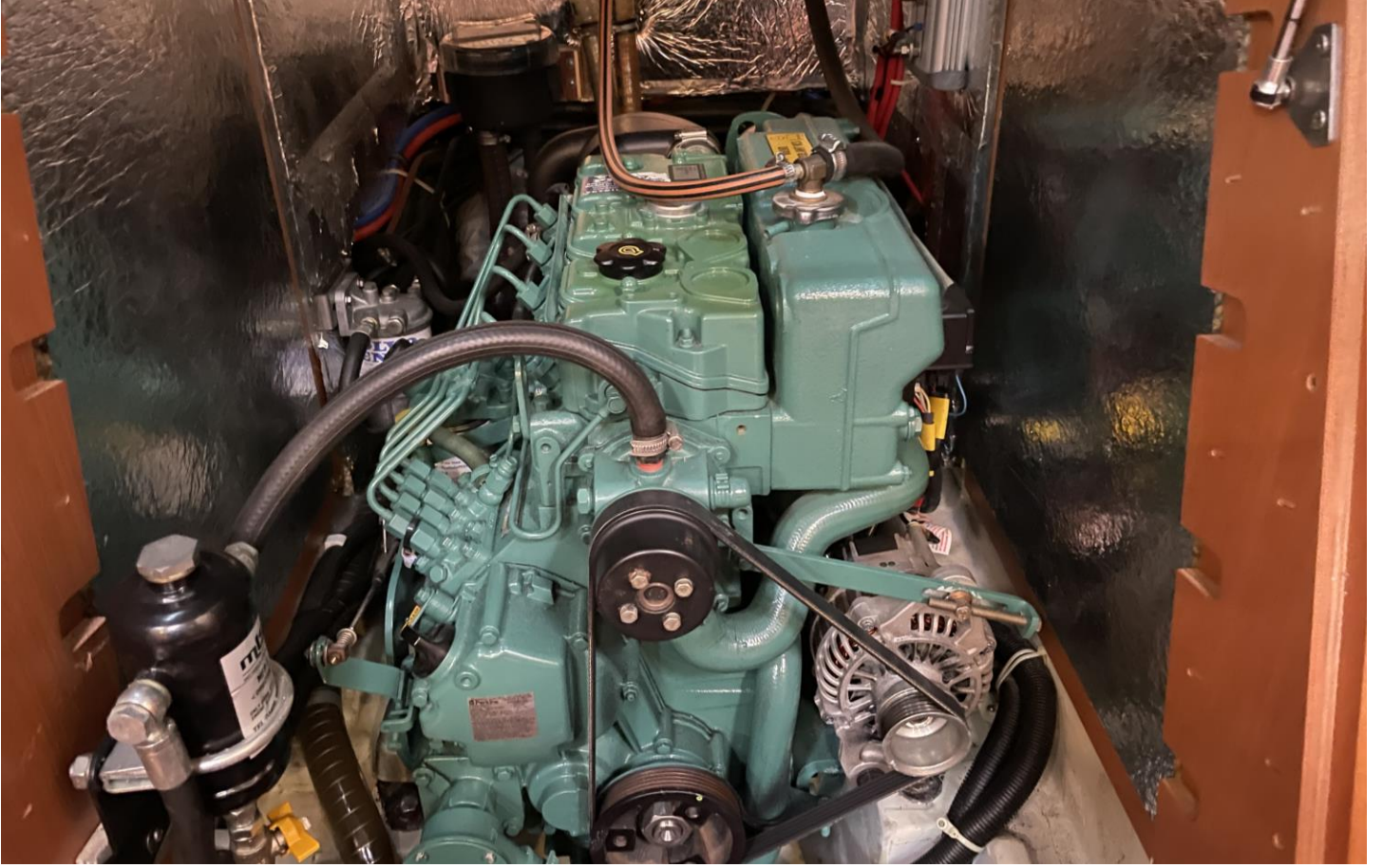












Can Arslan

+90 534 366 60 80 canarslan@canmarino.com

Can Oğuz

+90 532 710 88 58 canoguz@canmarino.com