



Bavaria 40 Cruiser - 2013

165.000€

Length	12,35 m.	Disp.	8,68 tons	Rig	In mast furl
Beam	3,96 m.	Engine	Volvo Penta D2 55	Cabin / Wc	3 / 2
Draft	2,05 m.	Engine Hours	697 hr	Location	Bodrum

Description

40 Cruiser, is a very popular model of the German shipyard Bavaria. The boat was ordered with the "Avangarde" equipment package. And she used privately.

Navigation & Cruising Equipments

Garmin GPS map 4008 Chartplotter
2x Garmin GMI 10 Tridata
Garmin GHC 10 Autopilot
Garmin GHS 10 i VHF
2x Plastimo Compass

Multimedia & Entertainment

JVC music system
Speakers Saloon , cockpit

12-220 V Electrics

2 x 110 Watt Solbian Solar panel
3x 180 Ah Excite AGM service (2023)
95 Ah Excite AGM start (2024)

Deck & Outside Equipments

Teak Cockpit floor
Quick windlass
Rocna Anchor – 100 m chain
Selden Rig (mast boom)
In mast furling main
Doblin sails (new)
2x Lewmar Electrical winch
2x Lewmar Manuel winch
Sprayhood – Bimini
Cockpit cover full
Cockpit cushions

Additional Equipments

2x Jabsco Elektrikli Wc
Side power Bow thruster
GRP white steering wheels
Swiming platform
Webasto heater

Galley

Engel Front opening fridge
Engel Freezer
2 burner stove

Layout

3 Cabin
2 WC

Tanks

Fuel Tank: 210 Liter
Fresh Water : 360 Liter

Notes

TR bayraklı







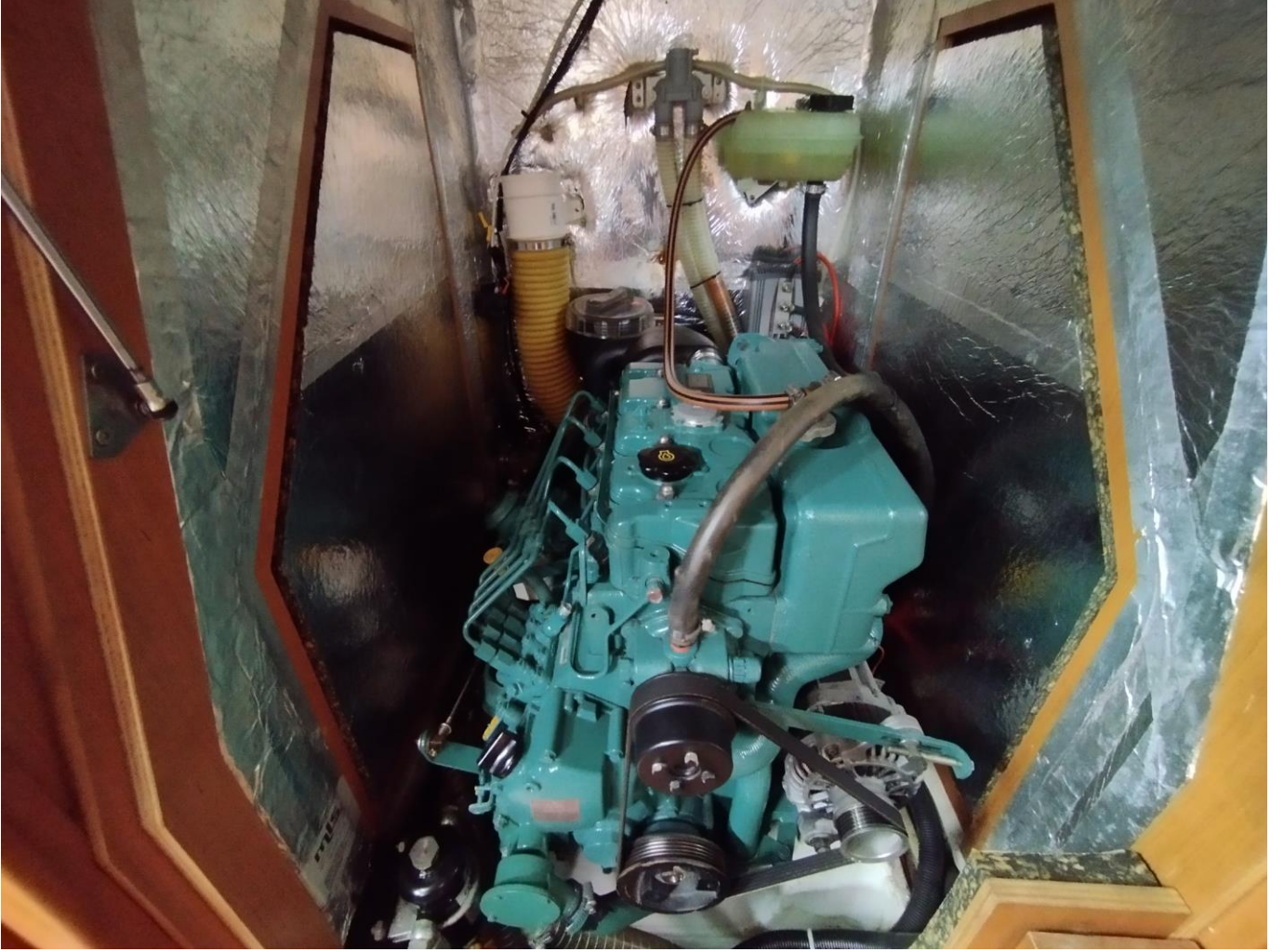












Can Arslan

+90 534 366 60 80 canarslan@canmarino.com

Can Oğuz

+90 532 710 88 58 canoguz@canmarino.com